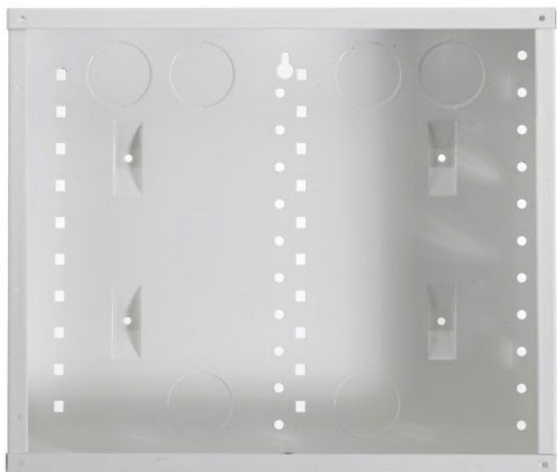




On-Q
12-in Enclosure with Screw-On Cover
Part No. EN1200



This 12-inch enclosure is the perfect solution for a basic or entry-level structured wiring system. It features large top openings that make pulling wire easier than ever before. The enclosure also boasts multiple knockouts, side lances, and side tabs for more flexible mounting. Includes a screw-on cover.

Features & Benefits

12-in Enclosure with Screw-On Cover

Flush and surface installation

Patented mounting system offers versatile module mounting options

Includes self-adhesive cable identification table

Made in the USA :

Drywall depth indicators

Mounting tabs provide correct flush-mount position for standard installations

Literature pouch included for dealer information

Cover included

Specifications

General Info

Product Line	On-Q	Color	White
UPC Number	804428050650	Country Of Origin	United States
Package Quantity	1	Application Sector	Residential
Standard	UL (UL985, UL1023, UL1863), cULus, CSA, RoHS	Type	Enclosure

Listing Agencies / 3rd Party Agencies

CSA Listed	Yes	cULus Listed	Yes
------------	-----	--------------	-----

Additional Information

RoHS Conformant Yes

Technical Information

Thickness	0.1 in	Cable Entry	(6) rear knockouts, (3) top knockouts, (2) rectangular knockouts for 1-gang electrical box in
Frame	Cold Rolled Steel		
